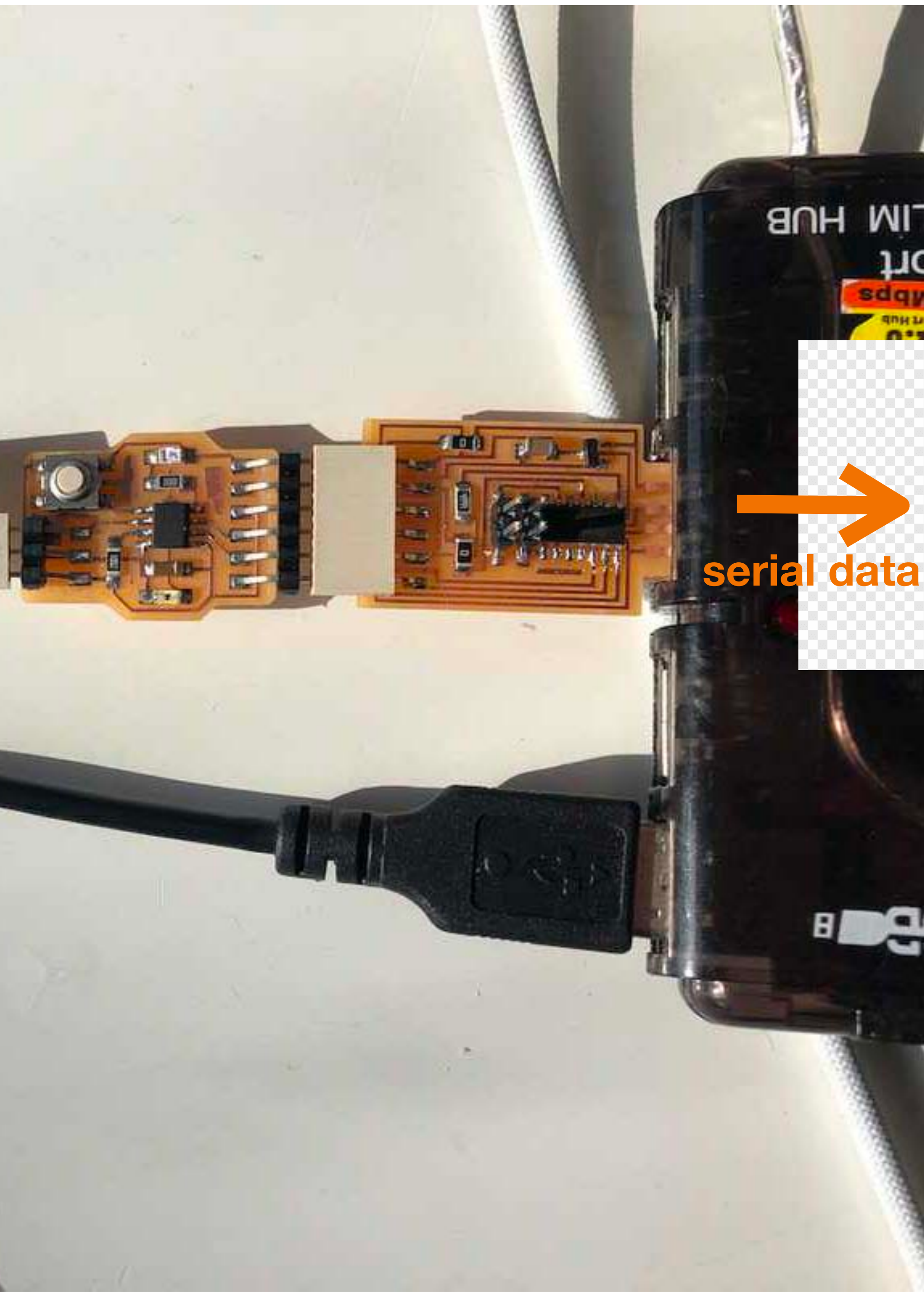
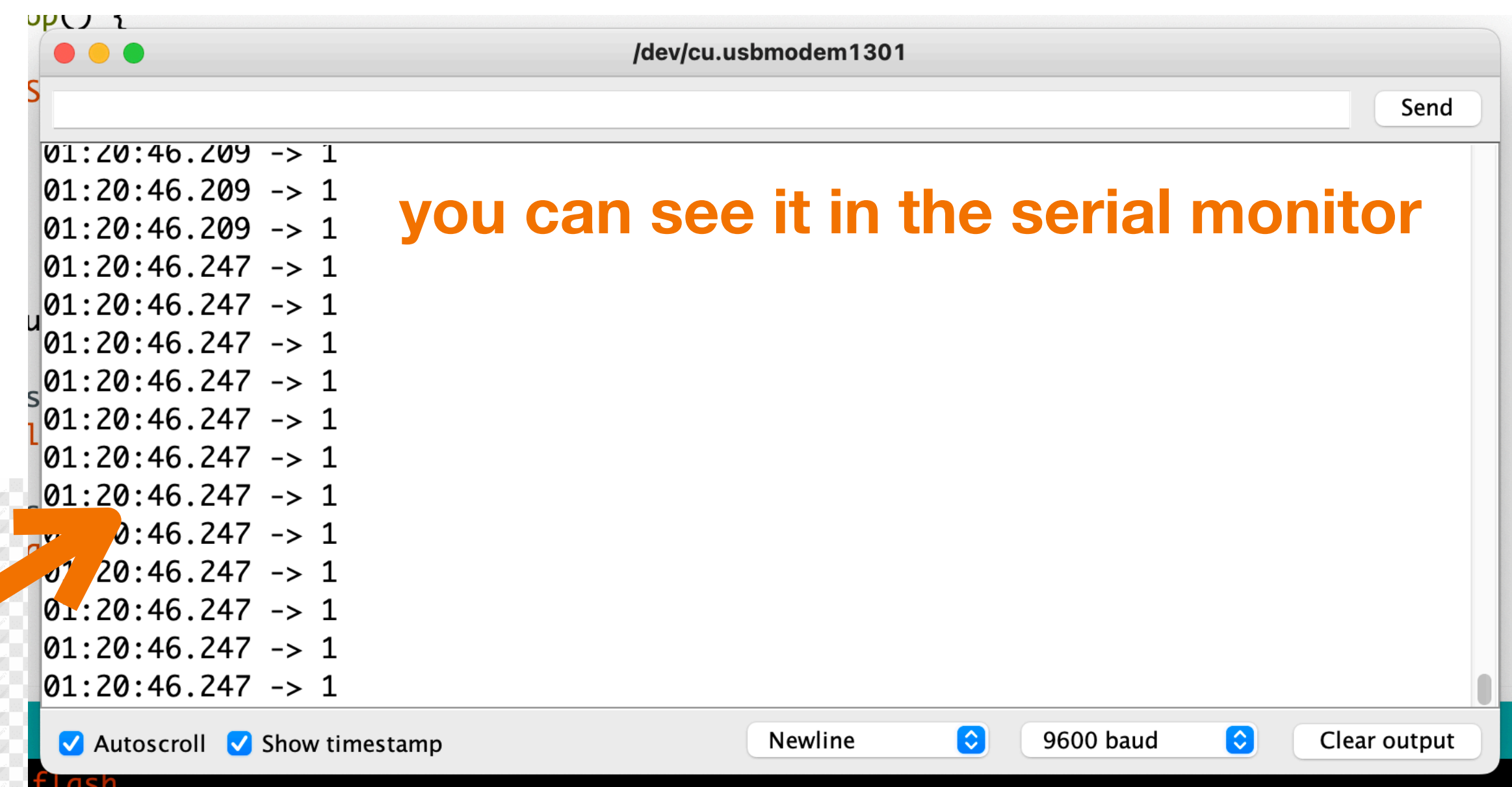


Applications & Ports

by Bas and Bente



serial data



but also use it in
other programs

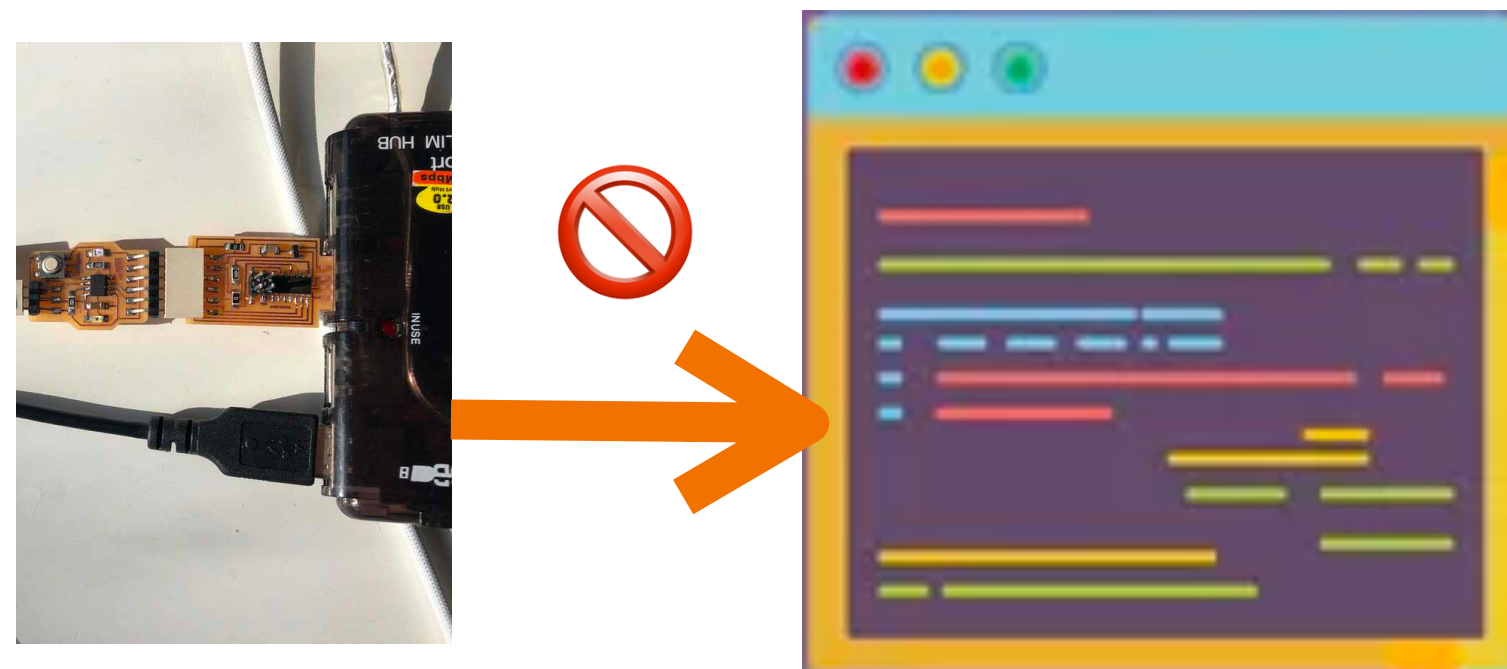


programs that have access to the serial port



**Bas
(Processing)**

programs that do not have access to the serial port



**Bente
(Web browsers)**

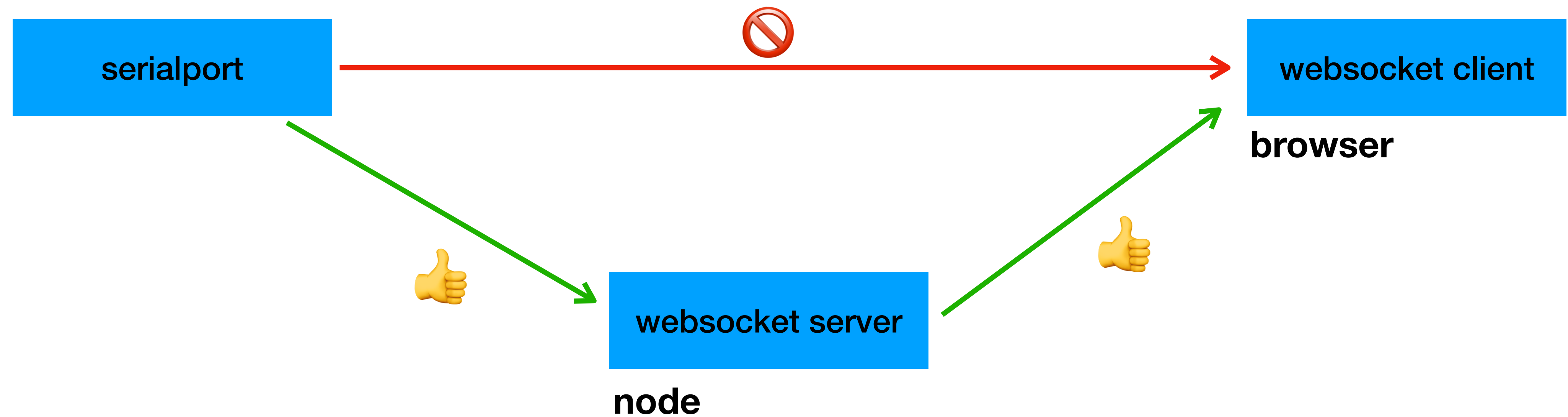
TODAY:

**I will show a random cat
every time I press the button on my**

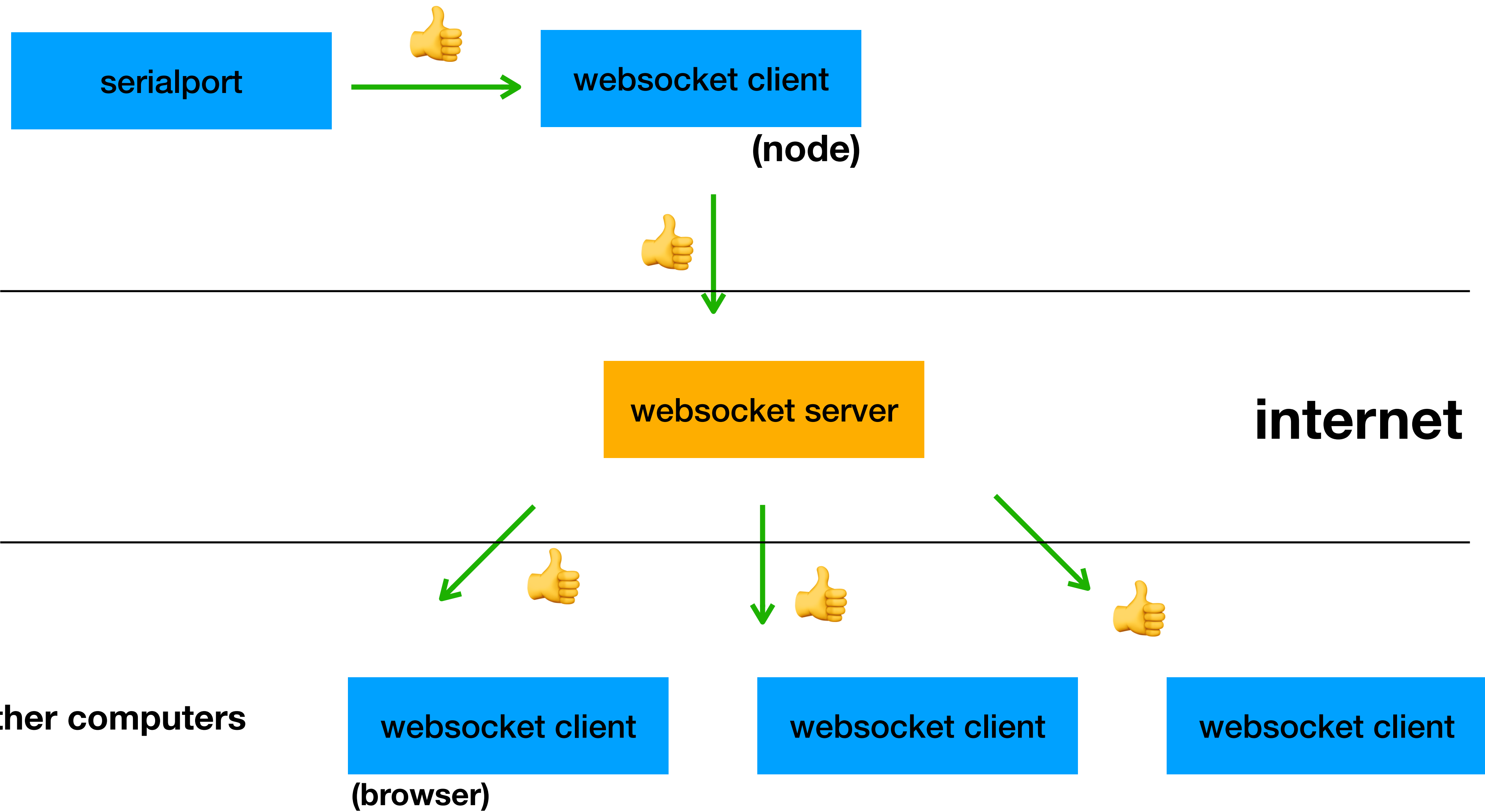
Hello World

board

local setup (everything on my computer)



my computer



Install Node.js

`https://nodejs.org/en/`

Packages needed

- `- serialport`
- `- ws`

`[in terminal: npm install [package name]`